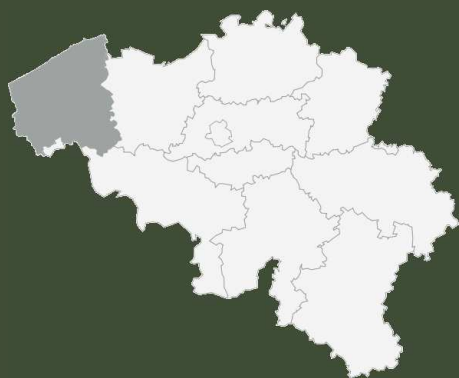


Westhoek *Belgium*



Westhoek Belgium

The Brush Man

It was my sixth form year at Wanganui boys college. My parents moved to the Waiarapa in august, and I remained to finish the third term staying with my great aunts, Hilda and Alice Stuart at number five Purnell street.

Some of my classmates and I would eat a warm lunch at their house every day as it was walking distance from school, and we could smoke our cigarettes on the veranda without fear of harassment from the teaching staff.

My aunts seemed to have a special liking for my friends Malcolm and Ian Cross, and treated their father who came by occasionally selling household cleaning products door to door as royalty.

I found it a little strange.

In 2007 Ian came to visit me in Amsterdam and together we drove to Ieper in the south of Belgium to visit the grave of his uncle Herbert.

My aunts never married and never spoke about the distance from happiness they'd endured.

Messines

"Messines" is a panorama of two overlapping large format negatives; two views of the same field representing the sameness of two different human perspectives.






Bitter dock / *Rumex obtusifolius*
Residue 5160



Elderberry / *Sambucus nigra*
Residue 5161



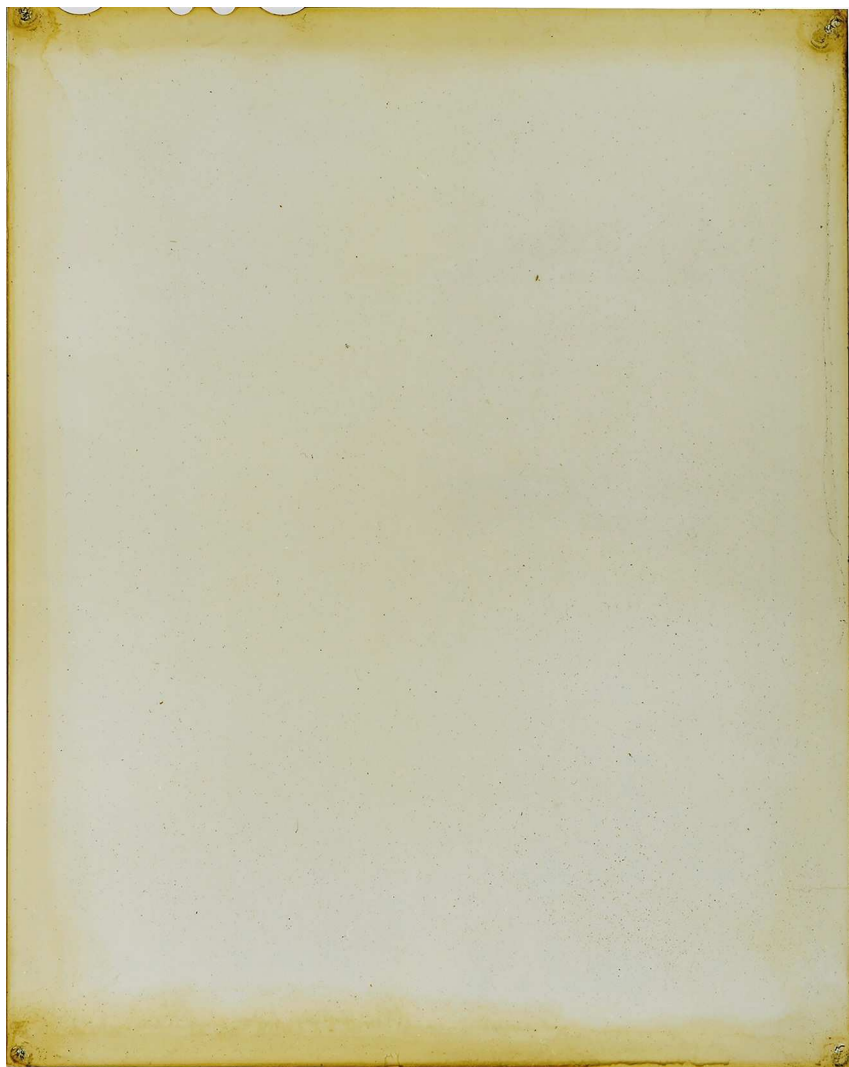
Raspberry / *Rubus*
Residue 5162



Mugwort / *Artemisia vulgaris*
Residue 5163



Yarrow / *Achillea millefolium*
Residue 5164



Musk thistle / *Carduus nutans*
Residue 5165



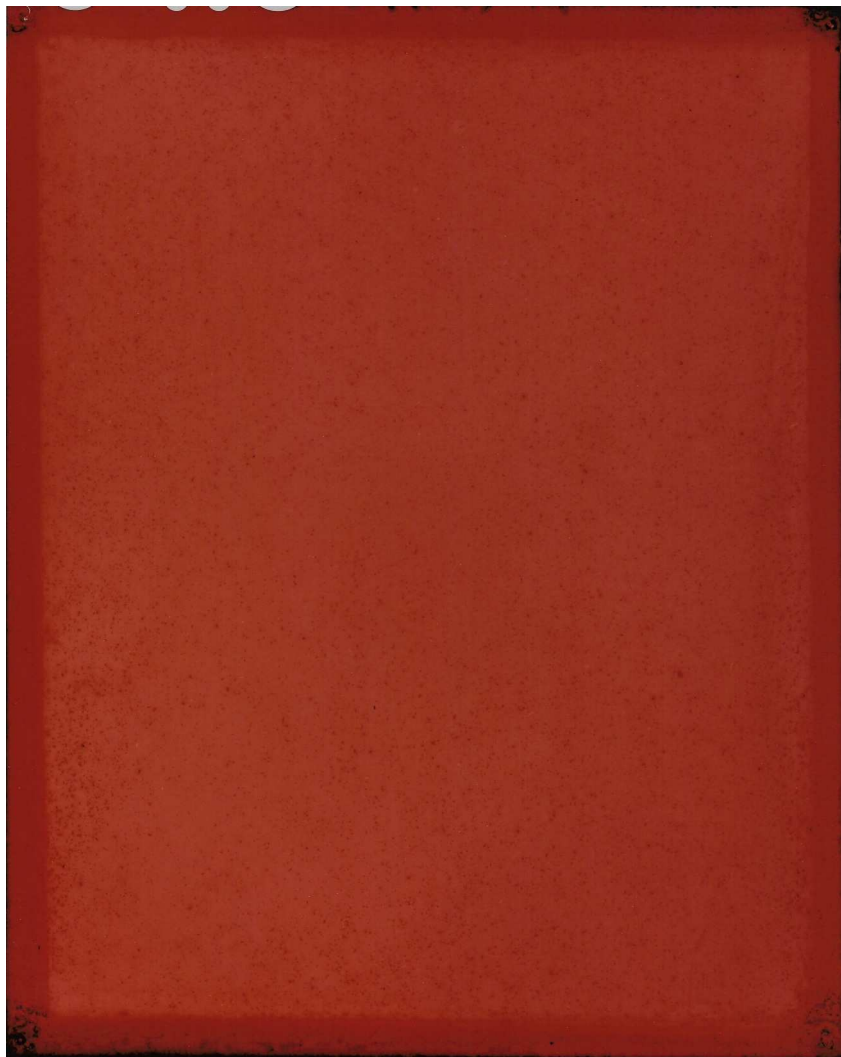
Rosebay willowherb / *Chamerion angustifolium*
Residue 5166



Meadow false fleabane / *Pulicaria dysenterica*
Residue 5167



Wild chamomile / *Matricaria chamomilla*
Residue 5168



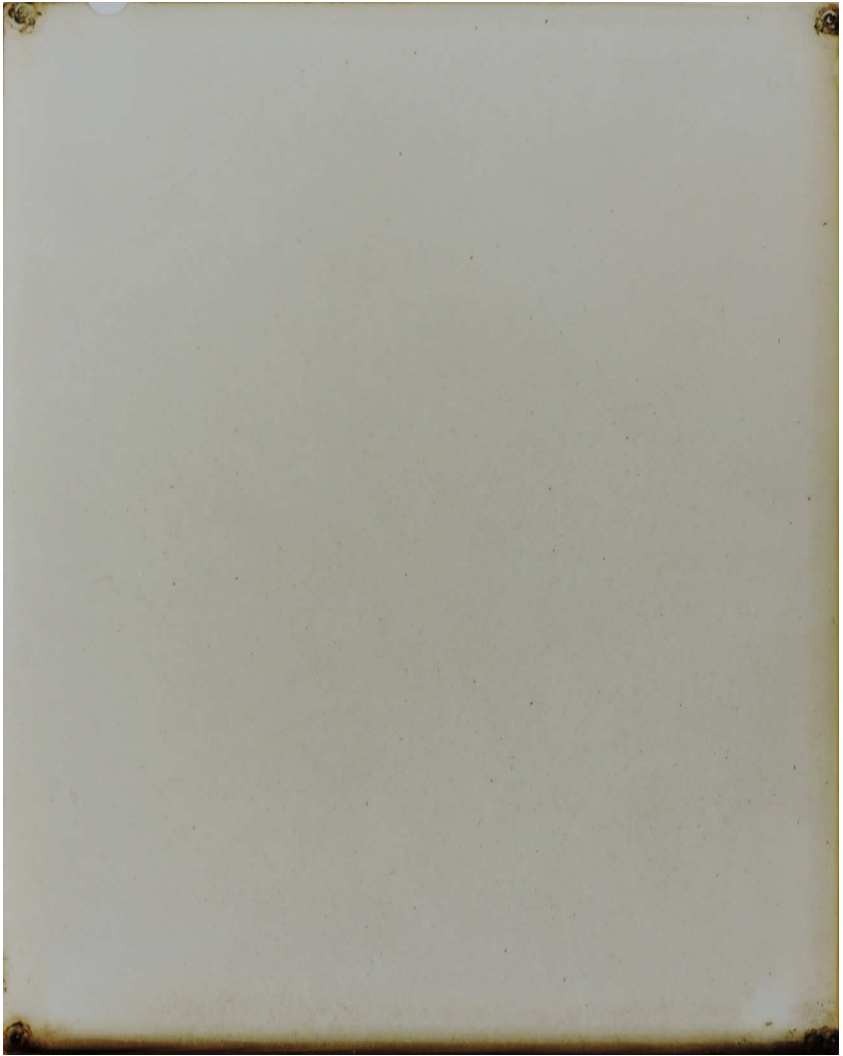
Dog rose / *Rosa canina*
Residue 5169



Annual mercury / *Mercurialis annua*
Residue 5188



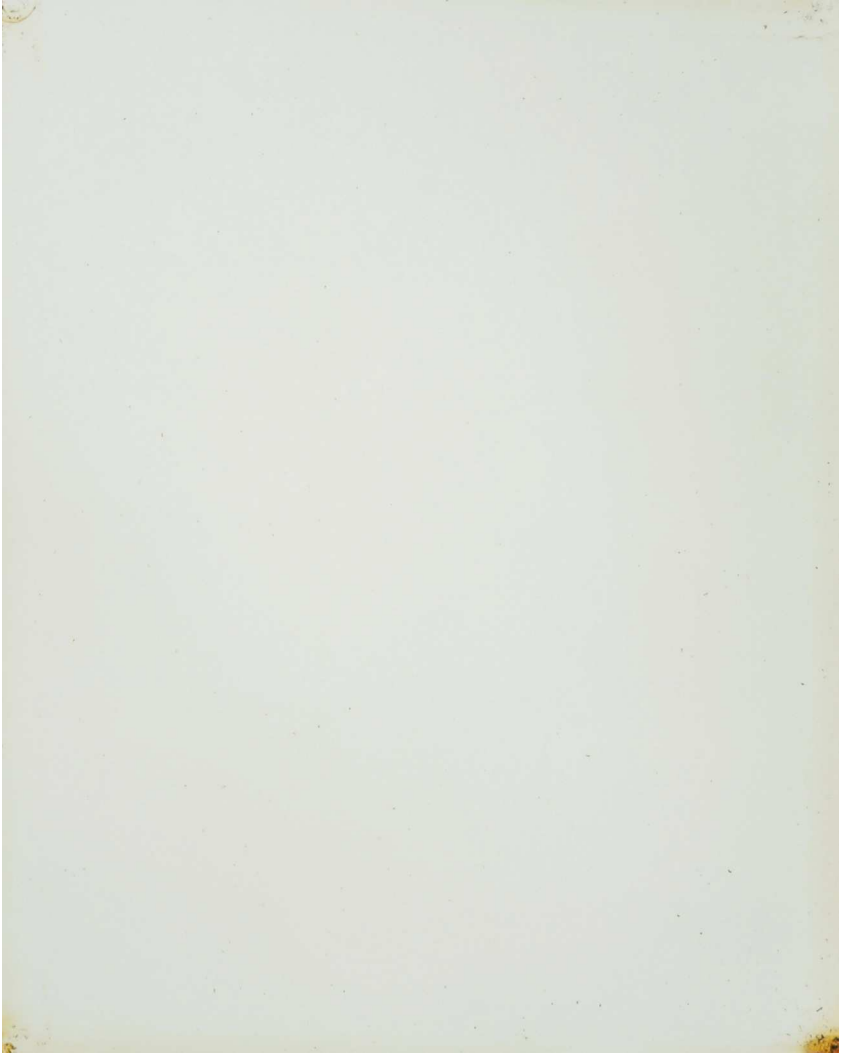
Hawthorn / *Crataegus*
Residue 5190



Nettles / *Urticae*
Residue 5197



Spurge / *Euphorbia*
Residue 5202



Floating pondweed / *Potamogeton natans*
Residue 5212



Field moude-ear / *Cerastium arvense*
Residue 5213



Common dandelion / *Taraxacum officinale*
Residue 5214



Bird cherry / *Prunus padus*
Residue 5215



Water dock / *Rumex hydrolapathum*
Residue 5216



Meadow buttercup / *Ranunculus acris*
Residue 5217



Cow parsley / *Anthriscus sylvestris*
Residue 5224

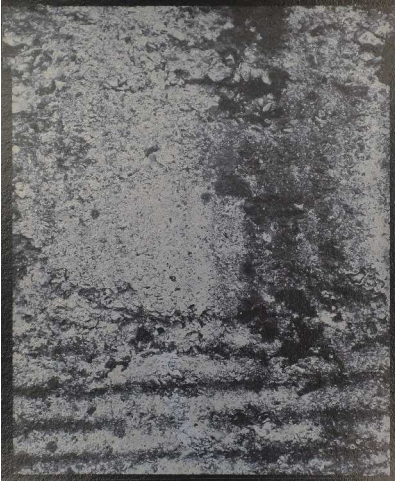


Willow / *Salix*
Residue 5225

Wytschaete

North, East, South, West

"Wytschaete" is a set of four reflective silver gelatine prints; stone walls dissolving into the viewer's reflection when viewed from nearby.

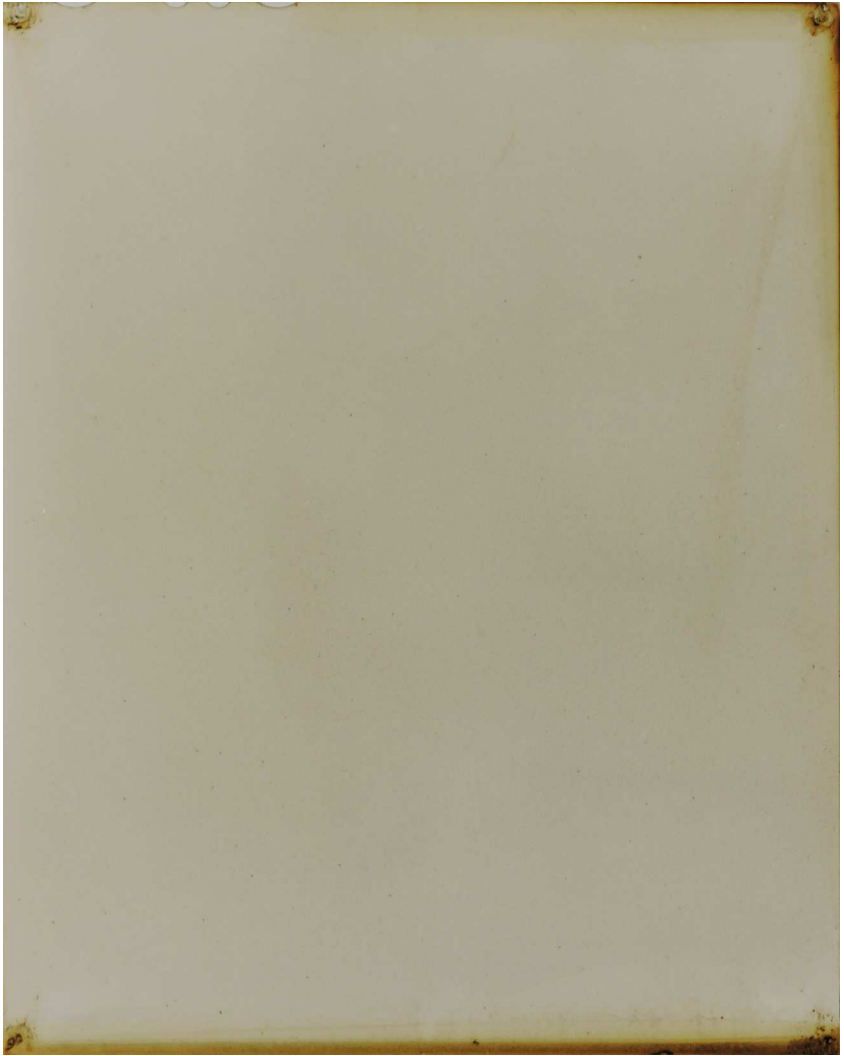




Willow / *Salix*
Residue 5170




Ribwort plantain / *Plantago lanceolata*
Residue 5171



Nettles / *Urticae*
Residue 5172



Willow / *Salix*
Residue 5173



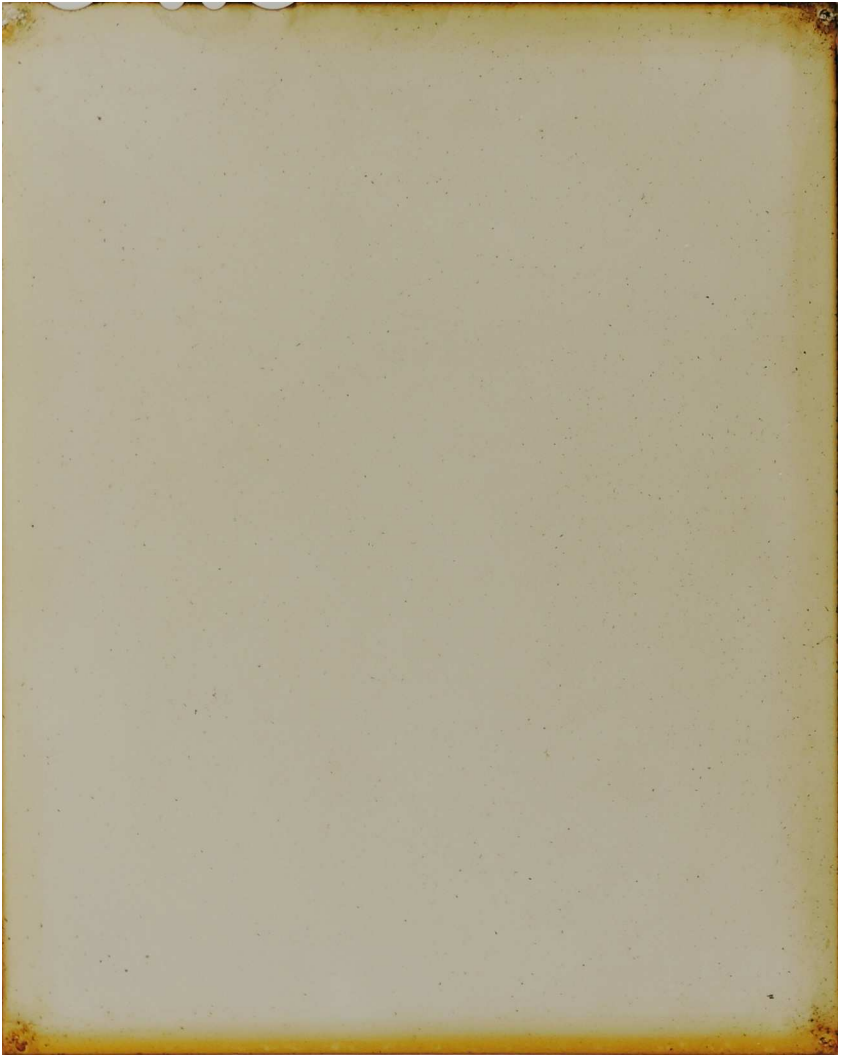
Hawthorn / *Crataegus*
Residue 5174



Wild Chamomile / *Matricaria chamomilla*
Residue 5175



Common chickweed / *Stellaria media*
Residue 5176



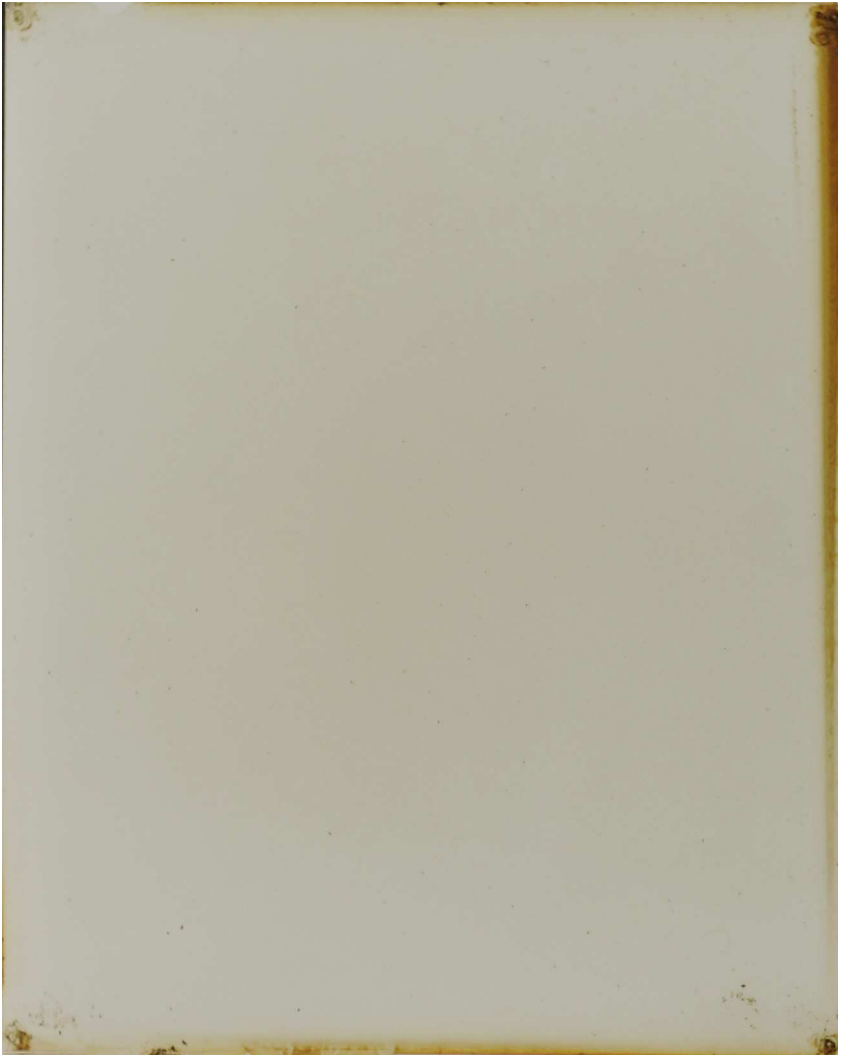
White goosefoot / *Chenopodium album*
Residue 5177



Common orange lichen / *Xanthoria parietina*
Residue 5178



Red dead-nettle / *Lamium purpureum*
Residue 5179



Common bent / *Agrostis capillaris*
Residue 5208



Pillow moss / *Leucobryum glaucum*
Residue 5209



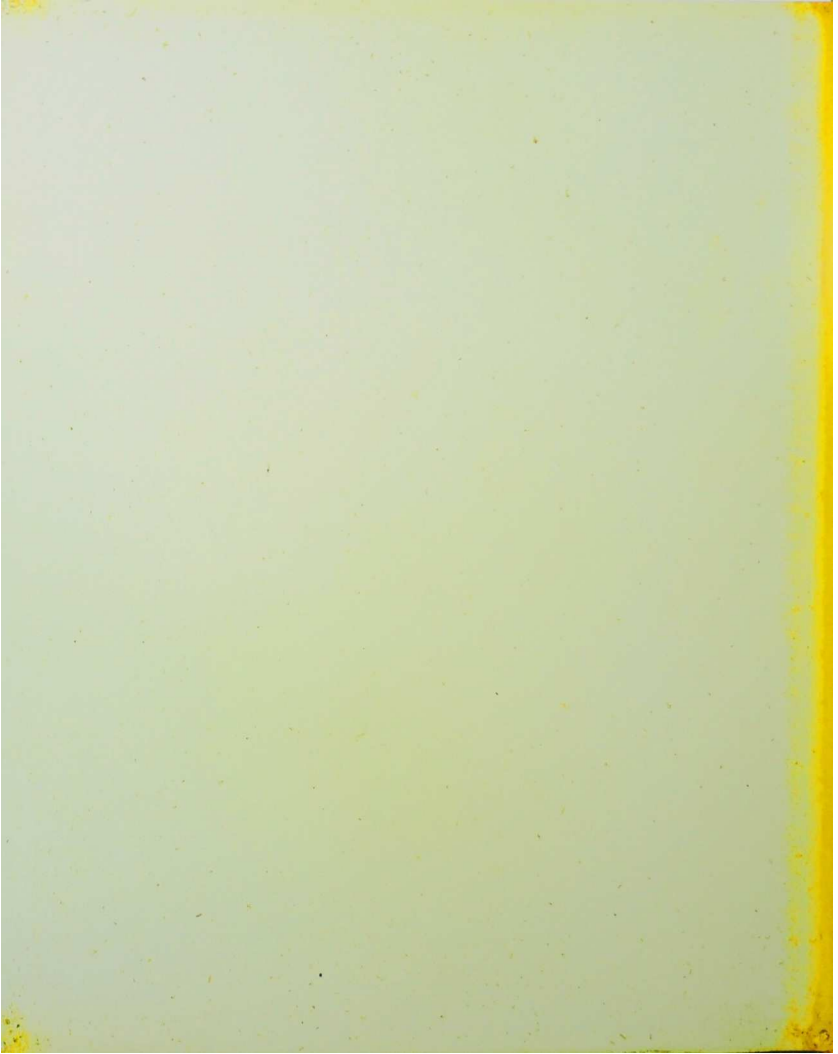
Sticky mouse-ear chickweed / *Cerastium glomeratum*
Residue 5210



Common dandelion / *Taraxacum officinale*
Residue 5211



Cuckooflower / *Cardamine pratensis*
Residue 5219



Oilseed rape / *Brassica napus*
Residue 5220



Common groundsel / *Senecio vulgaris*
Residue 5222

Passchendaele

"Passchendaele" shows a chaos of objects strewn over farmland where still macabre remnants from the battle of Passchendaele are regularly unearthed; suggestive of the continuity, adaptability and resilience of the human condition.





Shepherd's purse / *Capsella bursa-pastoris*
Residue 5180



Common reed / *Phragmites australis*
Residue 5181



Fumitory / *Fumaria*
Residue 5182



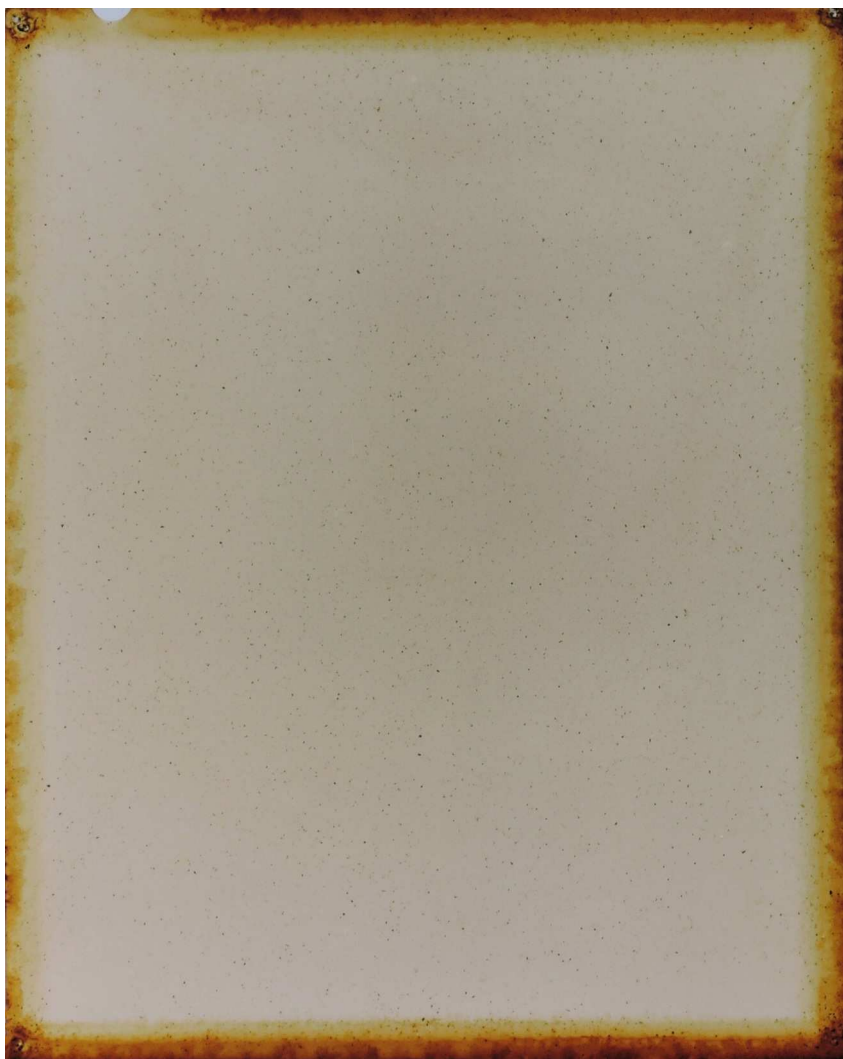
Raspberry / *Rubus*
Residue 5183



Ground elder / *Aegopodium podagraria*
Residue 5184



Common dandelion / *Taraxacum officinale*
Residue 5185



Nightshade / *Solanum*
Residue 5186



Common hogweed / *Heracleum sphondylium*
Residue 5187



Common tansy / *Tanacetum vulgare*
Residue 5189



Sorrel / *Rumex acetosa*
Residue 5191



Patato weed / *Galinsoga parviflora*
Residue 5192



Sow thistles / *Sonchus*
Residue 5193



False oat-grass / *Arrhenatherum elatius*
Residue 5194



Ragwort / *Jacoea vulgaris*
Residue 5195



Hairy willowherb / *Epilobium hirsutum*
Residue 5196



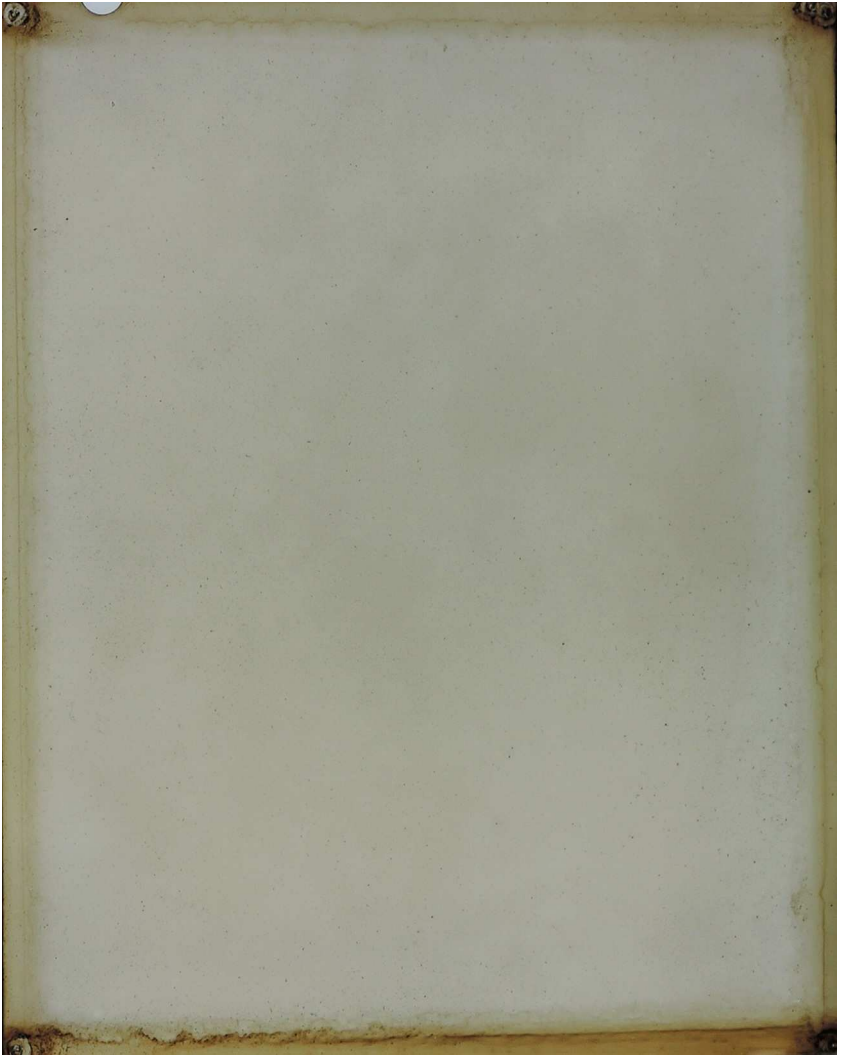
Goundsel / *Senecio vulgaris*
Residue 5198



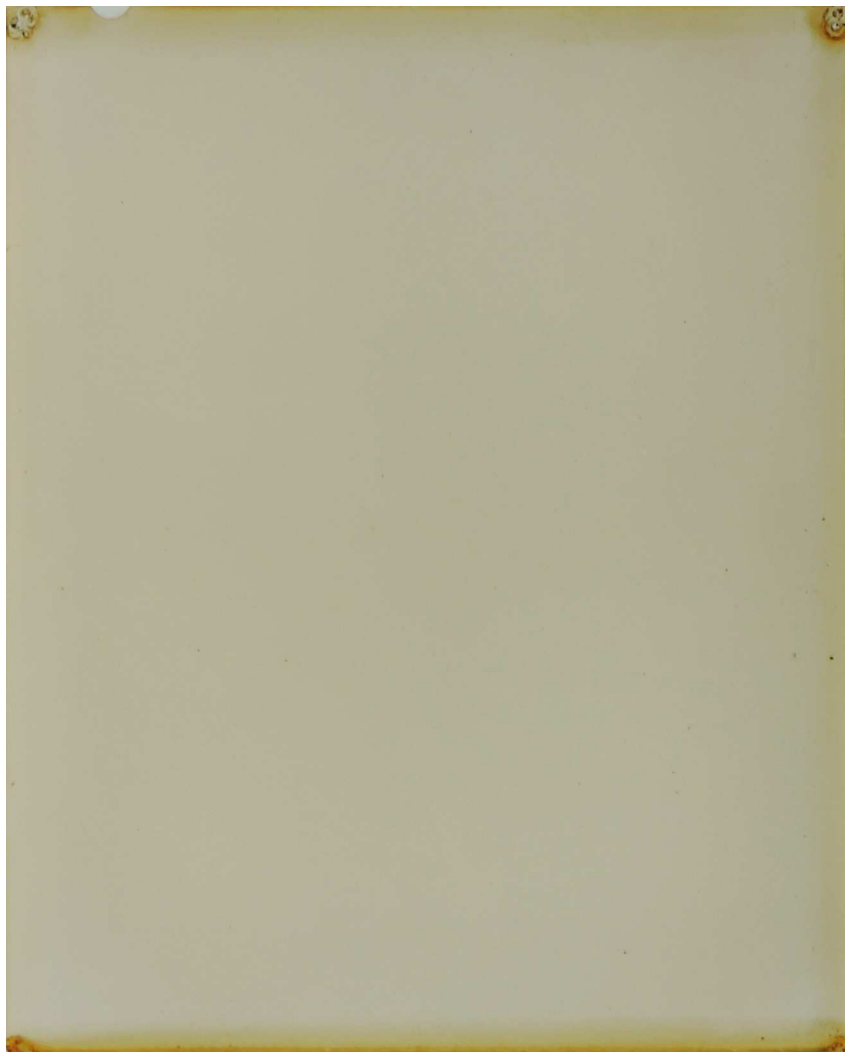
Common dandelion / *Taraxacum officinale*
Residue 5199



Redstem filaree / *Erodium cicutarium*
Residue 5200



Saltbush / *Atriplex*
Residue 5201



Bitter dock / *Rumex obtusifolius*
Residue 5203



Redstem filaree / *Erodium cicutarium*
Residue 5204



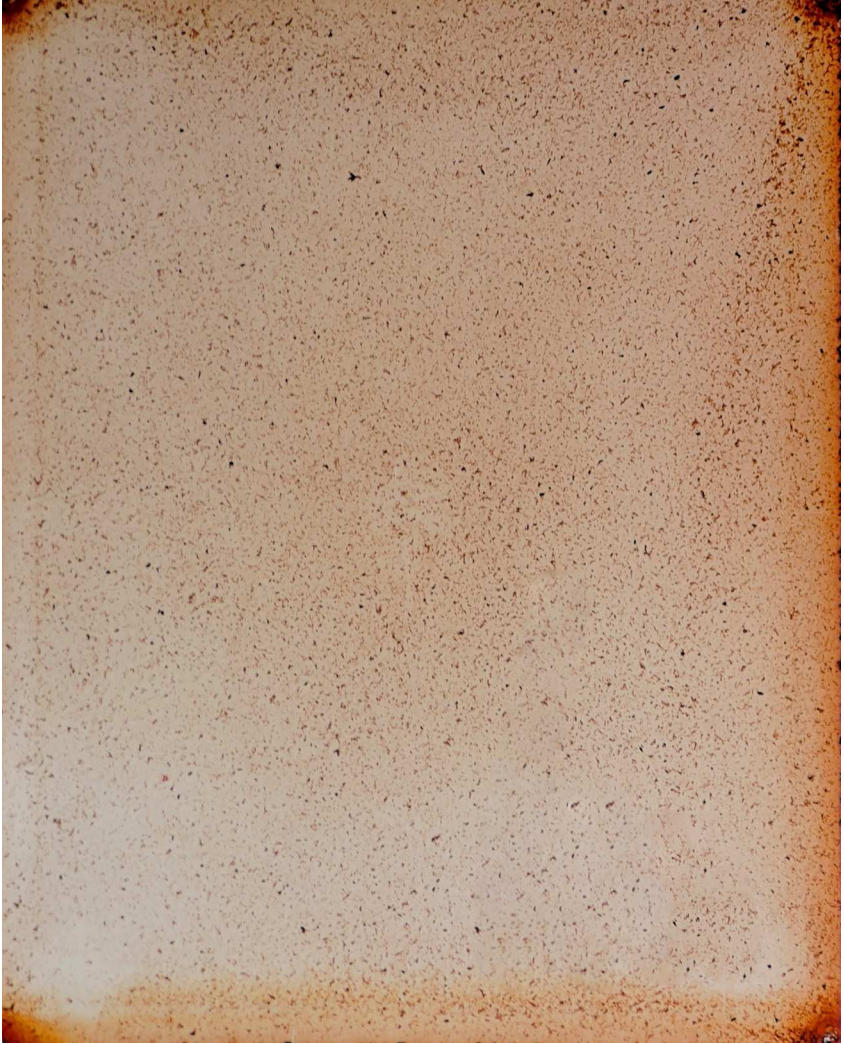
Canadian horseweed / *Conyza canadensis*
Residue 5205



Nightshade / *Solanum*
Residue 5206



Mugwort / *Artemisia vulgaris*
Residue 5207



Common sorrel / *Rumex acetosa*
Residue 5218



Bird vetch / *Vicia cracca*
Residue 5221



Narrowleaf plantain / *Plantago lanceolata*
Residue 5223

Plant names



| | | | | | | | | | | |
|------|------|------|------|------|------|------|------|------|------|------|
| 5211 | 5210 | 5209 | 5208 | 5207 | 5206 | 5205 | 5204 | 5203 | 5214 | 5215 |
| 5202 | 5201 | 5200 | 5199 | 5198 | 5197 | 5196 | 5195 | 5194 | 5216 | 5217 |
| 5193 | 5192 | 5191 | 5190 | 5189 | 5188 | 5187 | 5186 | 5185 | 5218 | 5219 |
| 5184 | 5183 | 5182 | 5181 | 5180 | 5179 | 5178 | 5177 | 5176 | 5220 | 5221 |
| 5175 | 5174 | 5173 | 5172 | 5171 | 5170 | 5169 | 5168 | 5167 | 5222 | 5223 |
| 5213 | 5212 | 5166 | 5165 | 5164 | 5163 | 5162 | 5161 | 5160 | 5224 | 5225 |

| Nr. | A. Nr. | English name | Botanic name | Part | Location |
|-----|--------|-----------------------|-------------------------|---------|-----------------------|
| 1 | 5160 | Bitter dock | Rumex obtusifolius | Flowers | Messines |
| 2 | 5161 | Elderberry | Sambucus nigra | Berries | Messines |
| 3 | 5162 | Raspberry | Rubus | Berries | Messines |
| 4 | 5163 | Mugwort | Artemisia vulgaris | Plant | Messines |
| 5 | 5164 | Yarrow | Achillea millefolium | Flowers | Messines |
| 6 | 5165 | Musk thistle | Carduus nutans | Flowers | Messines |
| 7 | 5166 | Rosebay willowherb | Chamerion angustifolium | Flowers | Messines |
| 8 | 5167 | Meadow false fleabane | Pulicaria dysenterica | Flowers | Messines |
| 9 | 5168 | Wild chamomile | Matricaria chamomilla | Flowers | Messines |
| 10 | 5169 | Dog rose | Rosa canina | Berries | Messines |
| 11 | 5170 | Willow | Salix | Branch | Wytschaete |
| 12 | 5171 | Ribwort plantain | Plantago lanceolata | Leaves | Wytschaete |
| 13 | 5172 | Nettles | Urticae | Plant | Wytschaete |
| 14 | 5173 | Willow | Salix | Leaves | Wytschaete |
| 15 | 5174 | Hawthorn | Crataegus | Leaves | Wytschaete |
| 16 | 5175 | Wild chamomile | Matricaria chamomilla | Flowers | Wytschaete |
| 17 | 5176 | Common chickweed | Stellaria media | Plant | Wytschaete |
| 18 | 5177 | White goosefoot | Chenopodium album | Plant | Wytschaete |
| 19 | 5178 | Common orange lichen | Xanthoria parietina | Plant | Wytschaete |
| 20 | 5179 | Red dead-nettle | Lamium purpureum | Plant | Wytschaete |
| 21 | 5180 | Shepherd's purse | Capsella bursa-pastoris | Plant | Passchendaele |
| 22 | 5181 | Common reed | Phragmites australis | Plant | Passchendaele |
| 23 | 5182 | Fumitory | Fumaria | Plant | Passchendaele |
| 24 | 5183 | Raspberry | Rubus | Berries | Passchendaele / brook |
| 25 | 5184 | Ground elder | Aegopodium podagraria | Leaves | Passchendaele |
| 26 | 5185 | Common dandelion | Taraxacum officinale | Leaves | Passchendaele |
| 27 | 5186 | Nightshade | Solanum | Plant | Passchendaele |
| 28 | 5187 | Common hogweed | Heracleum sphondylium | Leaves | Passchendaele |
| 29 | 5188 | Annual mercury | Mercurialis annua | Plant | Messines |
| 30 | 5189 | Common tansy | Tanacetum vulgare | Flowers | Passchendaele / brook |
| 31 | 5190 | Hawthorn | Crataegus | Berries | Messines |
| 32 | 5191 | Sorrel | Rumex acetosa | Leaves | Passchendaele |

| | | | | | |
|----|------|----------------------------|------------------------------|---------|-----------------------|
| 33 | 5192 | Potato weed | <i>Galinsoga parviflora</i> | Plant | Passchendaele |
| 34 | 5193 | Sow thistles | <i>Sonchus</i> | Plant | Passchendaele |
| 35 | 5194 | False oat-grass | <i>Arrhenatherum elatius</i> | Plant | Passchendaele |
| 36 | 5195 | Ragwort | <i>Jacobaea vulgaris</i> | Plant | Passchendaele |
| 37 | 5196 | Hairy willowherb | <i>Epilobium hirsutum</i> | Leaves | Passchendaele / brook |
| 38 | 5197 | Nettles | <i>Urticae</i> | Leaves | Messines |
| 39 | 5198 | Groundsel | <i>Senecio vulgaris</i> | Plant | Passchendaele |
| 40 | 5199 | Common dandelion | <i>Taraxacum officinale</i> | Flowers | Passchendaele |
| 41 | 5200 | Redstem filaree | <i>Erodium cicutarium</i> | Leaves | Passchendaele |
| 42 | 5201 | Saltbush | <i>Atriplex</i> | Plant | Passchendaele |
| 43 | 5202 | Spurge | <i>Euphorbia</i> | Plant | Messines |
| 44 | 5203 | Bitter dock | <i>Rumex obtusifolius</i> | Leaves | Passchendaele / brook |
| 45 | 5204 | Redstem filaree | <i>Erodium cicutarium</i> | Roots | Passchendaele |
| 46 | 5205 | Canadian horseweed | <i>Conyza canadensis</i> | Plant | Passchendaele |
| 47 | 5206 | Nightshade | <i>Solanum</i> | Plant | Passchendaele / brook |
| 48 | 5207 | Mugwort | <i>Artemisia vulgaris</i> | Plant | Passchendaele / brook |
| 49 | 5208 | Common bent | <i>Agrostis capillaris</i> | Plant | Wytschaete |
| 50 | 5209 | Pillow moss | <i>Leucobryum glaucum</i> | Plant | Wytschaete |
| 51 | 5210 | Sticky mouse-ear chickweed | <i>Cerastium glomeratum</i> | Plant | Wytschaete |
| 52 | 5211 | Common dandelion | <i>Taraxacum officinale</i> | Leaves | Wytschaete |
| 53 | 5212 | Floating pondweed | <i>Potamogeton natans</i> | Leaves | Messines |
| 54 | 5213 | Field mouse-ear | <i>Cerastium arvense</i> | Plant | Messines |
| 55 | 5214 | Common dandelion | <i>Taraxacum officinale</i> | Flowers | Messines |
| 56 | 5215 | Bird cherry | <i>Prunus padus</i> | Flowers | Messines |
| 57 | 5216 | Water dock | <i>Rumex hydrolapathum</i> | Leaves | Messines |
| 58 | 5217 | Meadow buttercup | <i>Ranunculus acris</i> | Flowers | Messines |
| 59 | 5218 | Common sorrel | <i>Rumex acetosa</i> | Flowers | Passchendaele |
| 60 | 5219 | Cuckooflower | <i>Cardamine pratensis</i> | Flowers | Wytschaete |
| 61 | 5220 | Oilseed rape | <i>Brassica napus</i> | Flowers | Wytschaete |
| 62 | 5221 | Bird vetch | <i>Vicia cracca</i> | Plant | Passchendaele |
| 63 | 5222 | Common groundsel | <i>Senecio vulgaris</i> | Plant | Wytschaete |
| 64 | 5223 | Narrowleaf plantain | <i>Plantago lanceolata</i> | Flowers | Passchendaele |
| 65 | 5224 | Cow parsley | <i>Anthriscus sylvestris</i> | Flowers | Messines |
| 66 | 5225 | Willow | <i>Salix</i> | Flowers | Messines |

Westhoek Belgium

In the autumn of 2017 we began our collection of plant material from the battlefields of Flanders. We started by extracting their coloured dyes and transferring these onto photographic material, looking for insight into the relationship between association and perception.

The resulting work is 66 plant extracts printed on photographic paper, hung in a visual grid measuring 245cm x 370cm. Accompanying this are two photographic prints of the locations Messines and Passchendaele, and four black and white prints of a bunker in the vicinity of Wytschaete. These bunker prints have a reflective silver surface that oxidizes and so changes over time.

The association with the location and the events that occurred here 100 years ago, together with the softness of the hues and the names of the plants invoke reflection on the strength and beauty of nature, and a strange sense of regret.

"Westhoek Belgium" is a plea for an end to the age of cynicism that began in the trenches of northern France a century ago. And dedicated to the families that never had the chance to be.

Flanders fields

a biochromatic document

dedicated to Hilda and Alice Stuart

www.arjahoppetersvenson.com

Edition / 100

© arjahoppetersvenson

